

# Calvert USA, Inc.

## Attic Stairs

Instruction for installation of Aluminum folding attic stairs  
Model numbers: 4085 to 4088, 4095 to 4098



Calvert USA, Inc., P.O. Box 841, Solomons, MD 20688,  
Tel.866-477-8455, (410) 326-8455, [www.calvertusa.com](http://www.calvertusa.com)

**Attention Installers: (Read all instructions prior to beginning installation.)**

**The installer is responsible for properly constructing the opening in the ceiling. If you are not sure the opening is framed properly, seek the help of a qualified person such as local building inspector, architect or structural engineer. Do not cut any framing until you are sure the structural integrity will not be compromised. You are responsible for any accidents and injuries that result from improper installation.**

*Do not install Calvert Attic Stairs until the interior wall and ceiling sheeting has been finished. Installation of Calvert Attic Stairs during a rough phase of construction will void the warranty. Calvert Attic Stairs are classified as millwork; the same as interior doors, cabinets, and trim, and should be installed just before interior painting.*

**Installation: requires minimum 3 people.**

1. Verify that you have the correct size rough opening in the ceiling. See table A on page 4.
2. One person should be in the attic while the other persons stays on the floor below. The person in the attic needs to have the tools necessary for tightening the nuts on the all thread bolts.
3. Install the all thread bolts in the corners of metal frame.
4. Lift the stairs into the openings. Make sure that the hinged end of the cover is installed so that the stairs open in the desired direction .
5. Install the hold down brackets on the all tread bolts, position diagonally across the corners over ceiling framing beams and tighten down with supplied nuts. Make sure the hold down brackets are secured properly on the top of ceiling framing members. No additional fastening is needed.
6. Do not use the stairs until the bottom section is trimmed to the correct length as described in cut to length instructions.

## Important:

To maintain the fire resisting properties of the stair unit, the space between the metal stair frame and the rough opening framing has to be completely filled with mortar or concrete.

## Cut to length instruction

1. Install attic stairs into the ceiling opening.
2. Open cover and unfold the stairs, leave the last section folded behind the stairs resting on the floor.
3. Make sure the upper sections are unfolded straight as if in use. Take a 2 (1) x 4 board, should be at least 8' long if ceiling height permits, align the board along the unfolded sections, extend so it rests on the floor and clamp to the upper sections of the stairs.
4. Lay a block of wood on the floor next to the 2 x 4 board and scribe the top of the block on the board to get the correct angle between the floor and the stairs.
5. Remove the board and cut angle.
6. Align the 2 x 4 board with the stairs as previously, resting the cut end of the board on the floor. Cut end of the board should be resting on the floor perfectly. Mark the bottom of the last unfolded section on the board and cut the upper part of board off. The part you have left has the exact length for last section of the stairs and will be a pattern for cutting of the last section.
7. Remove plastic stair shoes and save. Align the pattern with last section of stairs, hinged end has to align with square end of your pattern. Scribe the angled end of pattern on the stair section and cut stairs to size. Re-install the plastic shoes on the bottom of the ladder.

**Make sure the angle of your cut is parallel with the angle of steps. It is easy to make a mistake and cut the stair section wrong way, check twice.**

8. Close the stairs slightly and unfold the last section under the stairs and open stairs. When fully opened, the stairs should be in a straight line with no gaps between the hinges. The bottom of the stairs should be resting on the floor. If you have gaps between the upper hinges, stairs are probably too long ( Fig. 5). Go back and trim the stringers as described above. If you have gaps between the lower hinges, you have cut the stringers to short. Contact your supplier for a lower section stringer replacement.

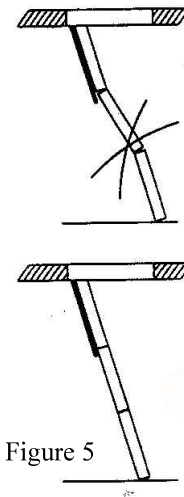


Figure 5



**The installation is finished.**

## Using the stairs:

1. Insert the pull down rod hook into the latch ring. Turn, pull the rod down . The latch should unlock and the cover will open slightly. Cover is heavy and must be held while opening. Do not let the cover door to drop open.
2. Using the rod hook, pull down the cover until you can reach it with your hand.
3. Open the cover fully and unfold the stair sections placing the lower section on the floor.
4. The stairs are now ready for normal use.
5. To close, lift and fold the stair sections pushing the cover up with your hand as far as possible.
6. Insert the rod and hook into the latch ring and push up until the latch locks the cover in place.

## Warning:

- Do not jump on the stairs.
- Do not let the stairs or the frame get wet. Water will damage the unit.
- **Do not exceed the total weight capacity. The user and materials combined weight capacity is 300 lb (150 kg).**
- There must be a railing in the attic around the stair opening to prevent someone from stepping into the stair opening accidentally.
- There must be a handrail available in the attic next to the stair opening for the user to hold on to while using the stairs.

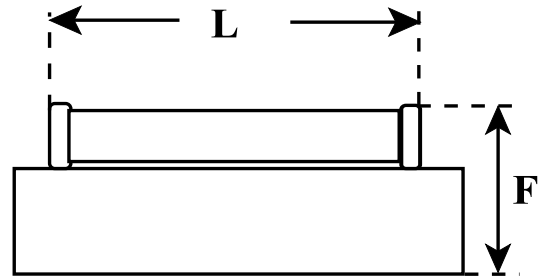
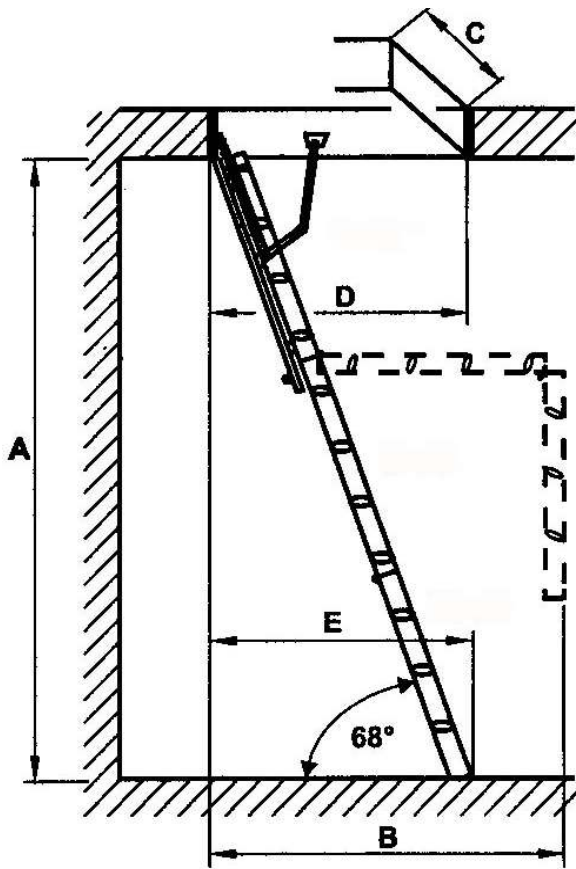
Table A :

| Model number | Number of steps | ( A ) Floor to ceiling | ( C, D ) Rough opening size | ( B ) Swing clearance | ( E)Landing space | Weight of the unit |
|--------------|-----------------|------------------------|-----------------------------|-----------------------|-------------------|--------------------|
| 4095         | 11              | 7' 2" to 9'1"          | 28" x 48"                   | 63"                   | 50"               | 155 lb             |
| 4096         | 13              | 7' 8" to 10'6"         | 28" x 52"                   | 71"                   | 57"               | 160 lb             |
| 4097         | 11              | 7' 2" to 9'1"          | 28" x 44"                   | 63"                   | 50"               | 150 lb             |
| 4098         | 11              | 7' 2" to 9'1"          | 24" x 44"                   | 63"                   | 50"               | 145 lb             |
| 4085         | 11              | 7' 2" to 9'1"          | 28" x 48"                   | 63"                   | 50"               | 145 lb             |
| 4086         | 13              | 7' 8" to 10'6"         | 28" x 52"                   | 71"                   | 57"               | 150 lb             |
| 4087         | 11              | 7' 2" to 9'1"          | 28" x 44"                   | 63"                   | 50"               | 140 lb             |
| 4088         | 11              | 7' 2" to 9'1"          | 24" x 44"                   | 63"                   | 50"               | 135 lb             |

Distributed by Calvert USA, Inc., P.O. Box 841, Solomons, MD 20688,  
Tel.866-477-8455, (410) 326-8455, www.calvertusa.com

MADE IN CZECH REPUBLIC

# Spec sheet: Aluminum folding attic stairs models 4085 to 4098



F - attic space clearance required

F = 14"

L - width of stair ladder

L = 16"

Frame construction

Metal, white finish, hi-temp gaskets

Steps size

16" x 3-1/8"

Frame height = 6"

Cover door construction

**Standard fire resistant cover door ( not rated):** white sheet metal clad bottom side of the door , 3/4" particle board core, 1.5" polystyrene foam panel on the top of the cover door, white MDF panel on the top of insulation

**Optional 60 min. fire rated cover door:** White sheet metal clad all sides, 7/8" Grenamat ® board core (mineral based product), All seams overlap are riveted, 1.5" polystyrene foam panel on the top of the cover door, White MDF panel on the top of insulation

Calvert USA, Inc. does not guarantee the acceptance of 60 minute fire rating test. Please review all document and information available from our web site [www.calvertusa.com](http://www.calvertusa.com) .

# Warranty

Prior to requesting warranty service, contact:

Calvert USA, Inc.  
P. O. Box 841  
Solomons, MD 20657  
Tel.( 866)-477-8455, (410) 326-8455  
E-mail us at [info@calvertusa.com](mailto:info@calvertusa.com).

Do not install Calvert Attic Stairs until the interior wall and ceiling sheeting has been finished. Installation of Calvert Attic Stairs during a rough phase of construction will void the warranty.

We at Calvert USA, Inc. make every effort to assure that this product meets the high quality and durability standards you expect. Calvert USA, Inc. warrants to the purchaser that this product is free of defects in materials and workmanship for the period of **one year** from the date of purchase. This warranty does not apply to damage due to misuse, abuse, negligence, unreasonable use or alterations. We shall in no event be liable for death, injuries to persons or property, or for incidental, contingent, special or consequential damages arising from the use of our product.

Some states do not allow the exclusion or limitation of incidental or consequential damages, so the above limitations or exclusions may not apply to you. This warranty gives specific legal rights, and you may also have other rights that vary from state to state.

To take advantage of this warranty, return the product to your supplier. If it is not possible to return the product to the supplier, you can return the product us with transportation charges prepaid. Dated proof of purchase and an explanation of the problem must accompany the merchandise. If our inspection verifies the defect, we will either repair or replace the product at our election or we may elect to refund the purchase price if we can not readily and quickly provide you with a replacement. We will return the product at our expense. However, if we determine that there is no defect, or that the defect resulted from causes not within the scope of our warranty, you must bear the cost of returning the product.